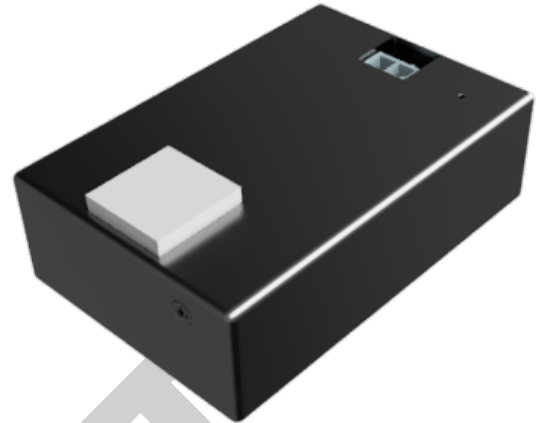


PoE Bridge

DOM-D-PE-1 | PoE+ PSE | 25.5 W | 802.3AF / 802.3AT | Domatic Bus

The PoE Bridge creates a single PoE PSE (Power-Sourcing Equipment) port that lets an off-the-shelf PoE device draw power from — and communicate over — the Domatic Bus. It supports IEEE 802.3AF and 802.3AT negotiation and delivers up to 25.5 W at the powered device.

A single input from the Domatic Bus (48 VDC nominal) and a single RJ45 output to the PoE PD make it a drop-in way to bring third-party devices — touchscreens, cameras, light fixtures, and more — onto the Domatic network. Per-device behavior is enabled and configured in software via the Domatic PowerHub.



Key Features

- ✓ Single PoE PSE port supporting both IEEE 802.3AF and 802.3AT negotiation
- ✓ Up to 25.5 W delivered at the powered device (PoE+ Type 2)
- ✓ Single 2-wire CL2 input from the Domatic Bus — power and PowerHub control on the same pair
- ✓ Single RJ45 output for connection to any standards-compliant PoE PD
- ✓ Bridges third-party PoE devices (touchscreens, cameras, light fixtures) onto the Domatic Bus
- ✓ Per-device feature support and behavior configured in software via the Domatic PowerHub
- ✓ Fits inside most single-gang wall boxes

Supported Device Types

The PoE Bridge can power and bridge any standards-compliant 802.3AF / 802.3AT PoE PD. Application-specific support — discovery, configuration, and control surfaces inside the Domatic Bus — must be enabled for the device type in PowerHub software. Examples include:

Touchscreens	Wall- or surface-mounted control panels and signage
Cameras	PoE-powered IP cameras
Light Fixtures	PoE-powered fixtures (architectural, accent, task)
Other	Any 802.3AF / 802.3AT PD within the 25.5 W budget — pending PowerHub support

Electrical Specifications

Input — Domatic Bus

Input Voltage	Nominal 48 VDC (Domatic Bus)
Communication	Domatic Bus (IEEE 1901 HD-PLC over the same 2-wire pair as power)

Power Source	Domatic PowerHub output port
---------------------	------------------------------

Output – PoE PSE

PoE Standards	IEEE 802.3AF (Type 1) and IEEE 802.3AT (Type 2)
Unsupported Standards	IEEE 802.3BT / PoE++
Power Delivery Mode	Mode B
Negotiation	Auto-classification of attached PD
Max Output Power	25.5 W at the PD (PoE+ Type 2)
Output Connector	RJ45
Ethernet Data Rate	10/100BASE-T
PD Compatibility	Any standards-compliant 802.3AF / 802.3AT powered device

I/O Configuration

I/O	Connector	Description
Domatic Bus Input	Molex Mini-Fit	2-wire CL2 input from the PowerHub. Carries 48 VDC and the Domatic Bus protocol on the same conductors. Mates with PowerHub output ports.
PoE Output	RJ45	Single 10/100BASE-T Mode B PoE PSE port. Negotiates 802.3AF or 802.3AT with the attached PD and delivers up to 25.5 W.

Communication & Control

Network Protocol	IEEE 1901 HD-PLC, Domatic Device Protocol
Wiring (input side)	2-wire CL2 cable (power + data combined)
Controller	Domatic PowerHub (required)
Configuration	PD device type, behavior, and reporting – software-configurable per port via the PowerHub
Monitoring	Power draw and link state reported to the PowerHub

Mechanical Specifications

Dimensions	73.2 x 49.2 x 22.4 mm (L x W x H)
Weight	150 g
Enclosure Material	Black anodized aluminum
Mounting	Two M3 x 3 mm threaded holes on rear of enclosure, spaced 20 mm apart

Environmental Specifications

Operating Temperature	TBD
Installation	Indoor only

Standards & Compliance

PoE Standards	IEEE 802.3AF (Type 1), IEEE 802.3AT (Type 2)
Unsupported PoE Standards	IEEE 802.3BT / PoE++
Power Source	NEC Class 2 from the PowerHub output
Safety	TBD

Ordering Information

Model Number	Description
DOM-D-PE-1	PoE Bridge – Single PoE+ PSE port (25.5 W), 802.3AF / 802.3AT, Domatic Bus

DRAFT